



Delivering Your Dreams...

Carving  
Collection

Graceful  
**Simplicity**

600x600mm | New Addition



**SPECIAL**  
*Carving*

# SPECIAL *Carving*

Captivate with dramatic colors and luxury textures in our new Special Color tile collection. Expertly crafted from fine Italian porcelain in bold 600x600mm sizes for high-end spaces. Contact us to add seductive, head-turning style to any room.

---

**600x600mm | New Addition**

[www.spentagonceramic.com](http://www.spentagonceramic.com)

# BUILD your own SUCCESS STORY with Spentagon

#10 Years  
#Of Excellence

**We are manufacturers and exporters of  
porcelain tiles as well as slabs (interior and exterior)**

Everyone wants to walk into a home that is both warm and welcoming, without compromising on style and durability. Spentagon is collection of wood effect floor coverings, all beautifully replicated to give the appearance of natural textures to enhance your home's interior. Drawing inspiration from various wood species finishes, including rustic reclaimed planks to smooth contemporary tiles, Spentagon has a design to suit every room in your home.

**12+ SURFACE**

**100%**  
WATER PROOF



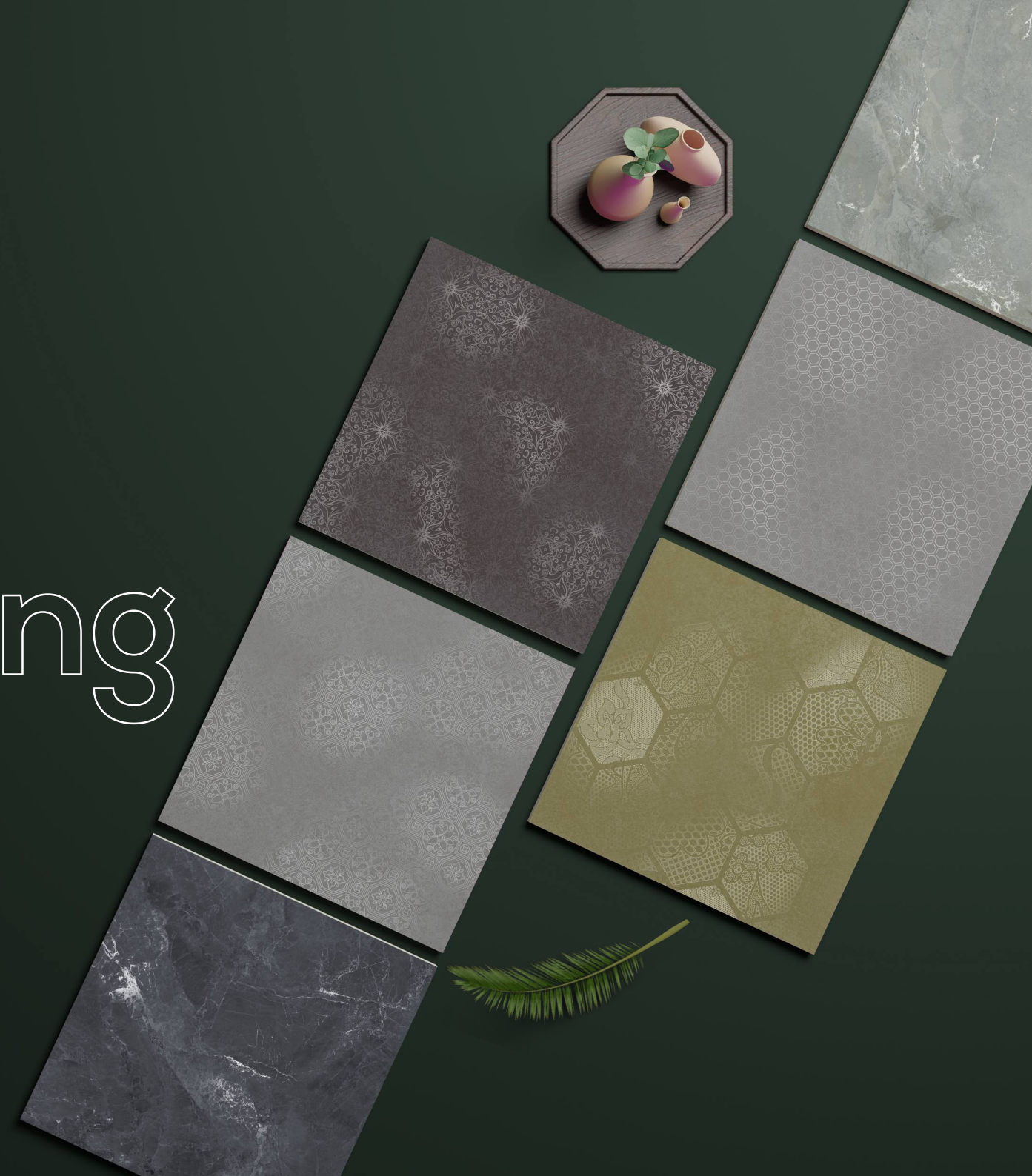
**SPECIAL**  
*Carving*



# 600x600mm | New Addition

# Unveiling

the beauty beneath our feet



**12+ SURFACE**

**100%**  
WATER PROOF

## Long Lifespan

if properly installed and maintained, porcelain tiles has the ability to last for decades of recommended use.

## Aesthetically Pleasing

We have different colors, shapes, and styles of flooring to help match the aesthetic appeal of our customers.

## Hygiene

The surface of ceramic and porcelain tiles does not easily retain antigens or allergens, not do they absorb fumes, odors or smoke.

## Less Staining

porcelain tiles is less absorbent, therefore you won't experience any staining in the event of spilled drinks, food, or chemicals.



### Fire Resistant

Our tiles are non-combustible and will not burn, melt, or give off toxic fumes when it is exposed to fire.



### Water Proof

Our tiles are impervious to liquids. their colours won't fade even if spills and puddles sit for a long while on your floors or surfaces.



### Scratch Resistant

Our tiles are scratch-resistant which means that they will continue to look naturally amazing even after years of heavy traffic.



### Impact Resistant

Our tiles have good strength and therefore, can withstand intense force or shock applied at the surface.



### Stain Resistant

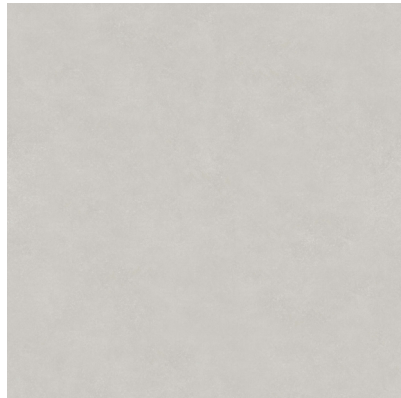
Because of its low porosity, vitrified tiles do not stain easily. Even coffee, wine, and the muddiest messes cannot deteriorate it.



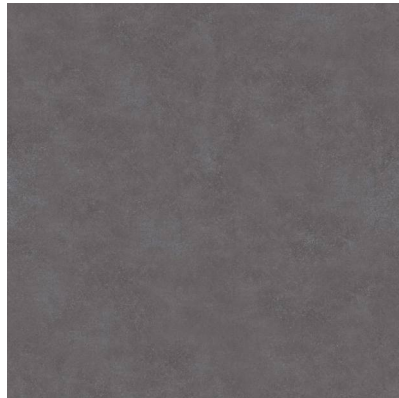
### Simpliclean

All tiles are easy to clean with a broom, vacuum, or wet mop. Our tiles are easier to clean and maintain.

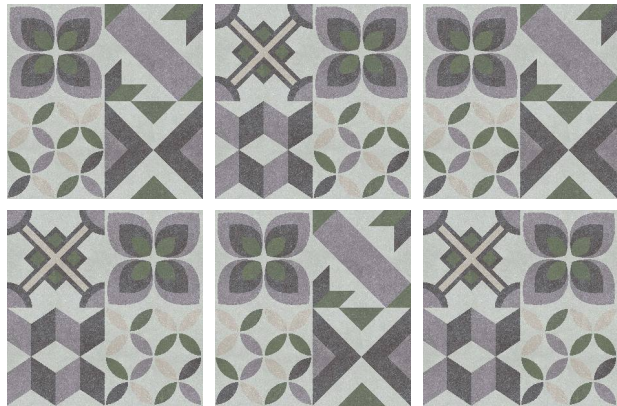
600x600mm | New Addition



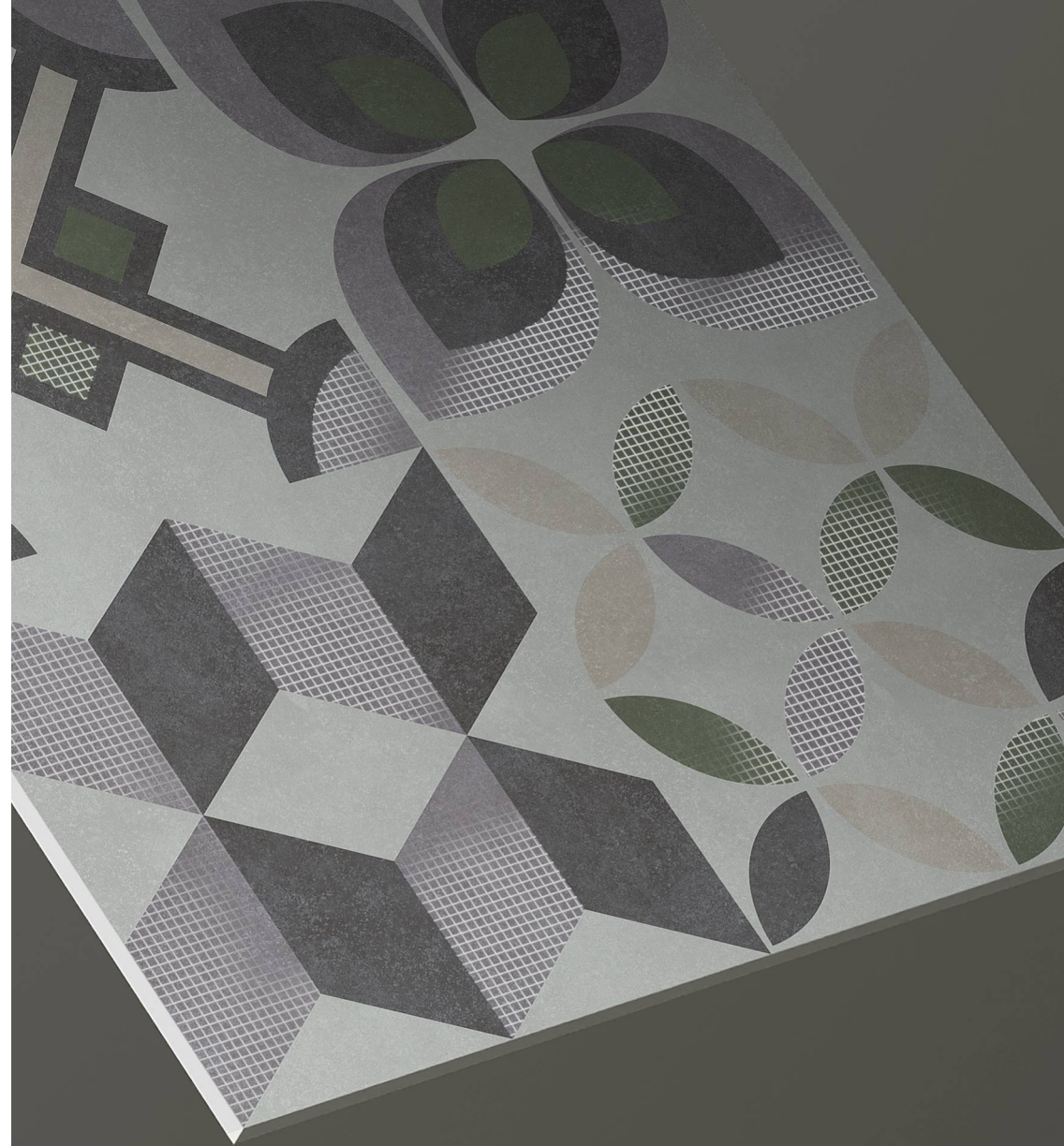
AKOTA LIGHT



AKOTA DARK



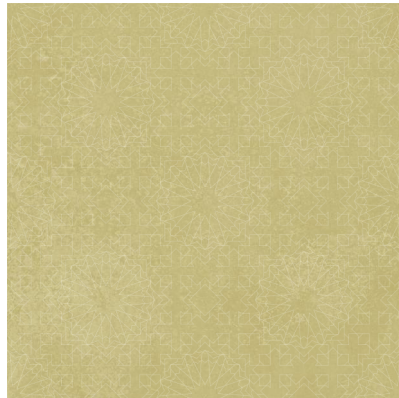
RANDOM HL



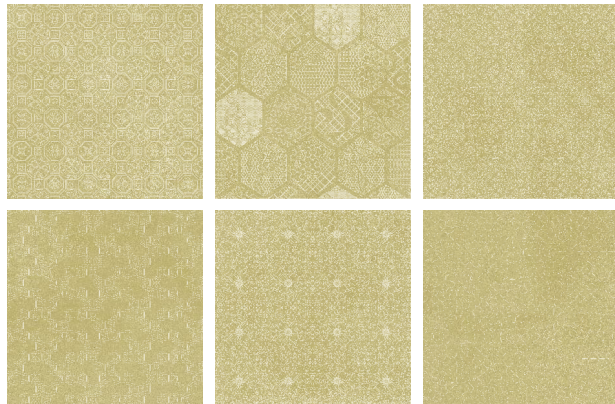
600x600mm | New Addition



**EDEN GOLD BESE**



**EDEN GOLD HL**



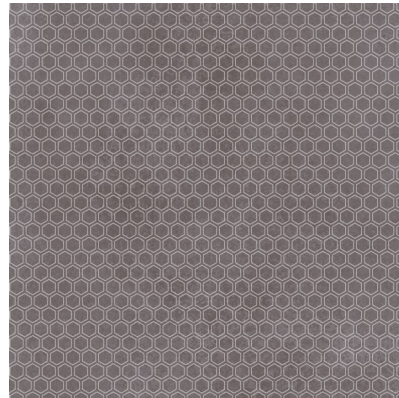
**RANDOM HL**



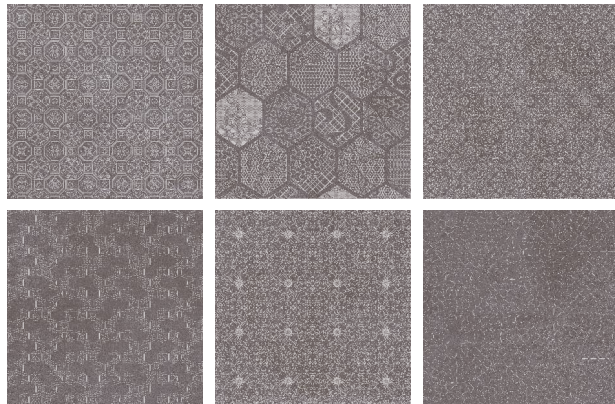
600x600mm | New Addition



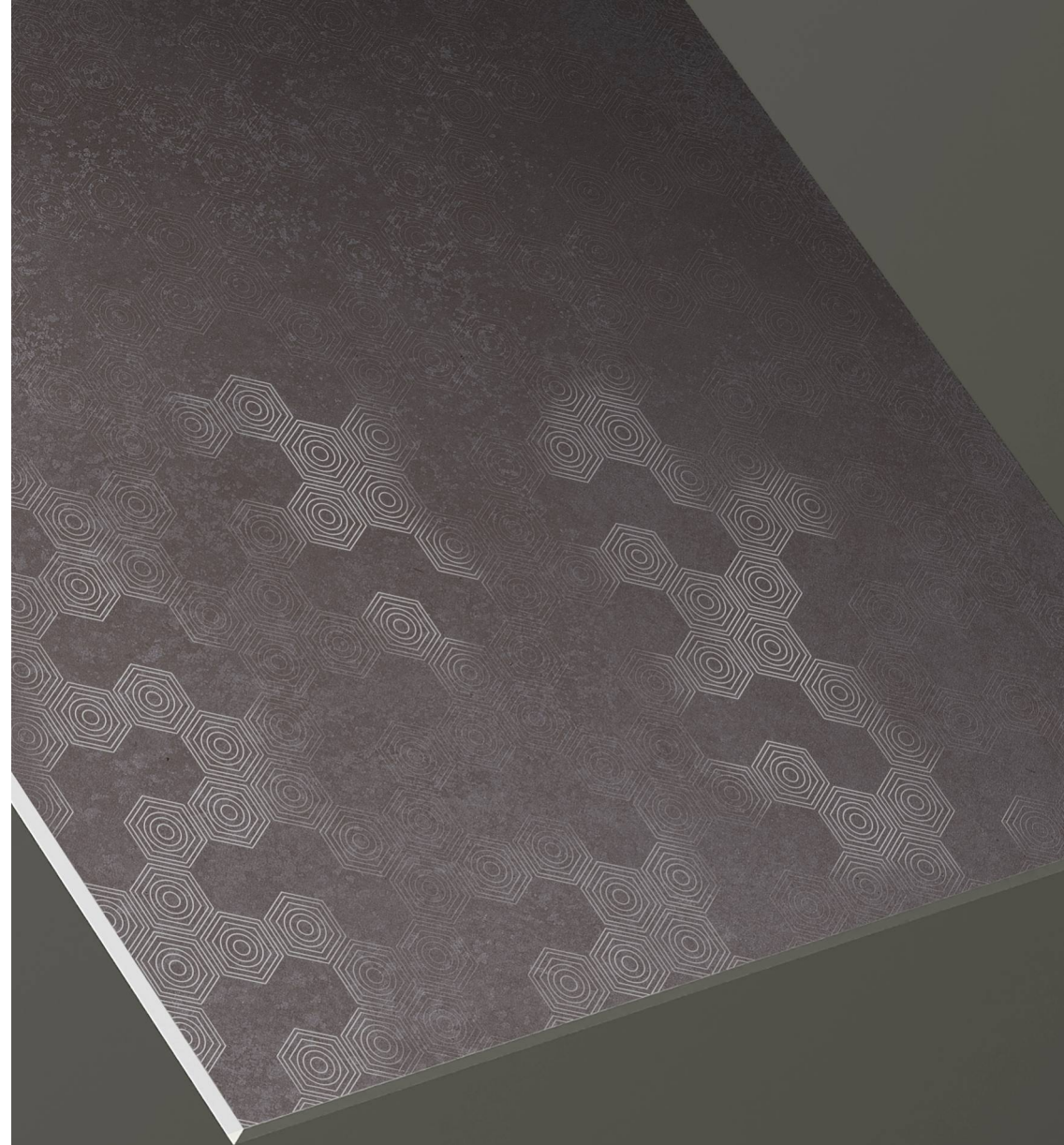
EDEN MARUOON BASE



EDEN MARUOON HL



RANDOM HL







## EDEN MARUOON

600x600mm | New Addition

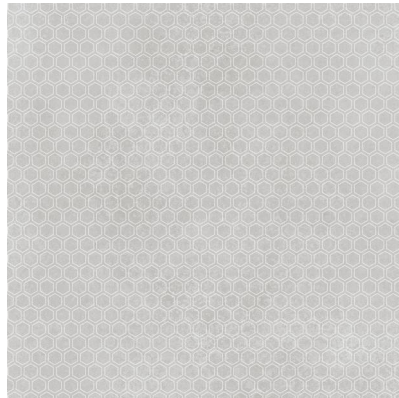
12+ SURFACE

100%  
WATER PROOF

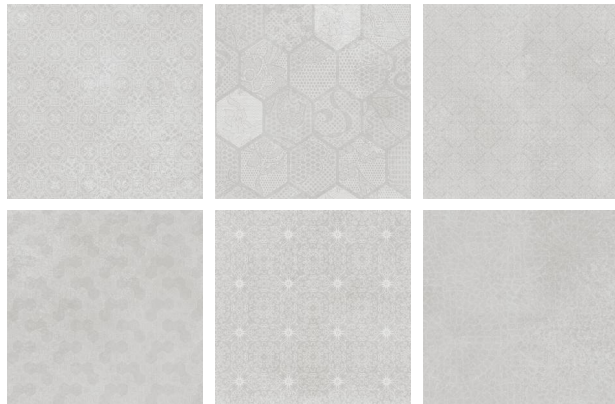
600x600mm | New Addition



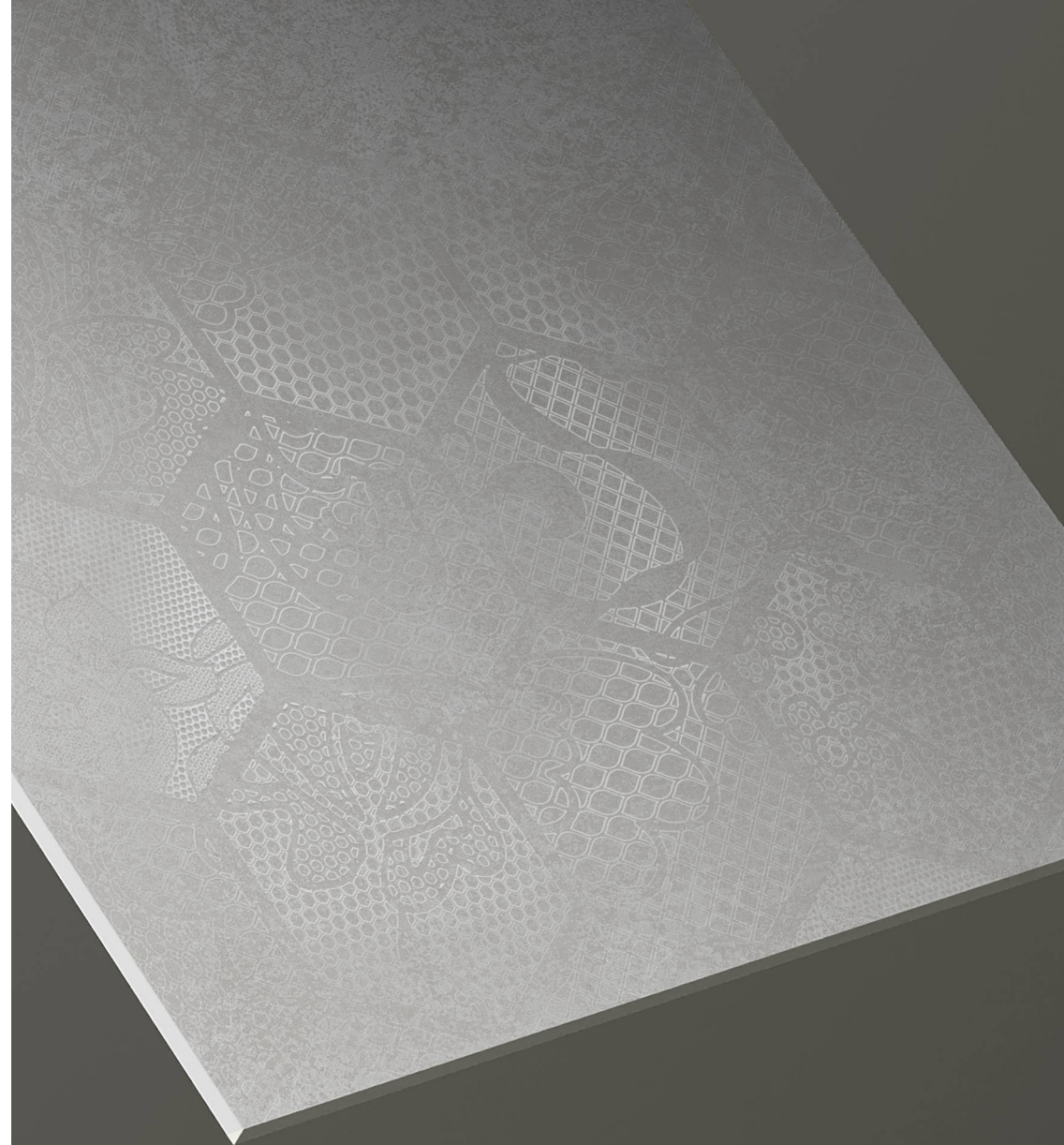
**EDEN PINK BESE**



**EDEN PINK HL**



**RANDOM HL**



**SPECIAL**  
*Carving*

**Carving**  
Collection

600x600mm | New Addition



Design: **Astrus Beige**  
Finish: **Carving**  
Series: **Special Color**

[www.spentagonceramic.com](http://www.spentagonceramic.com)



60x  
60cm



## ASTRUS BEIGE

600x600mm | New Addition

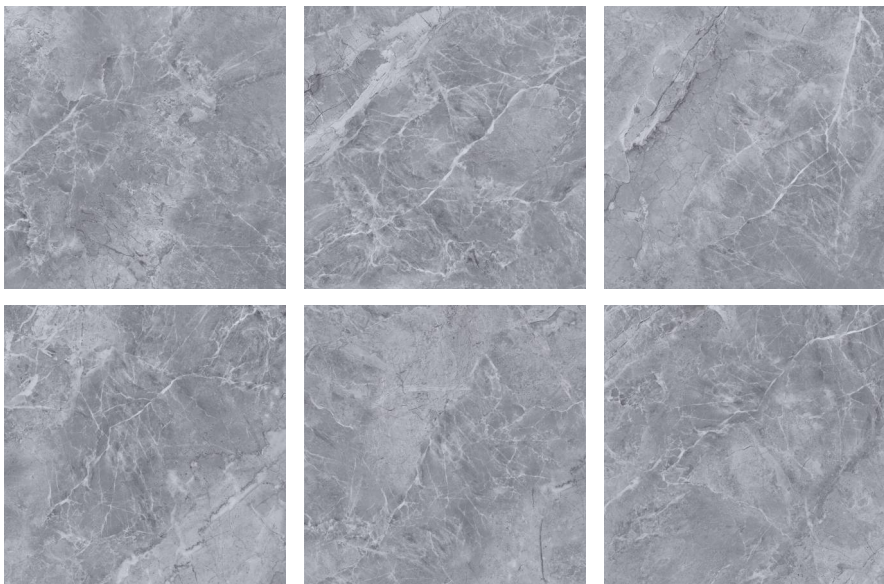
12+ SURFACE

100%  
WATER PROOF

**SPECIAL**  
*Carving*

**Carving**  
Collection

600x600mm | New Addition



Design: **Astrus Grey**  
Finish: **Carving**  
Series: **Special Color**

[www.spentagonceramic.com](http://www.spentagonceramic.com)



60x  
60cm

**SPECIAL**  
*Carving*

**Carving**  
Collection

600x600mm | New Addition



Design: **Astrus Marfil**  
Finish: **Carving**  
Series: **Special Color**

[www.spentagonceramic.com](http://www.spentagonceramic.com)



60x  
60cm



## ASTRUS MARFIL

600x600mm | New Addition

12+ SURFACE

100%  
WATER PROOF

**SPECIAL**  
*Carving*

**Carving**  
Collection

600x600mm | New Addition



Design: **Bosco Grigio**  
Finish: **Carving**  
Series: **Special Color**

[www.spentagonceramic.com](http://www.spentagonceramic.com)



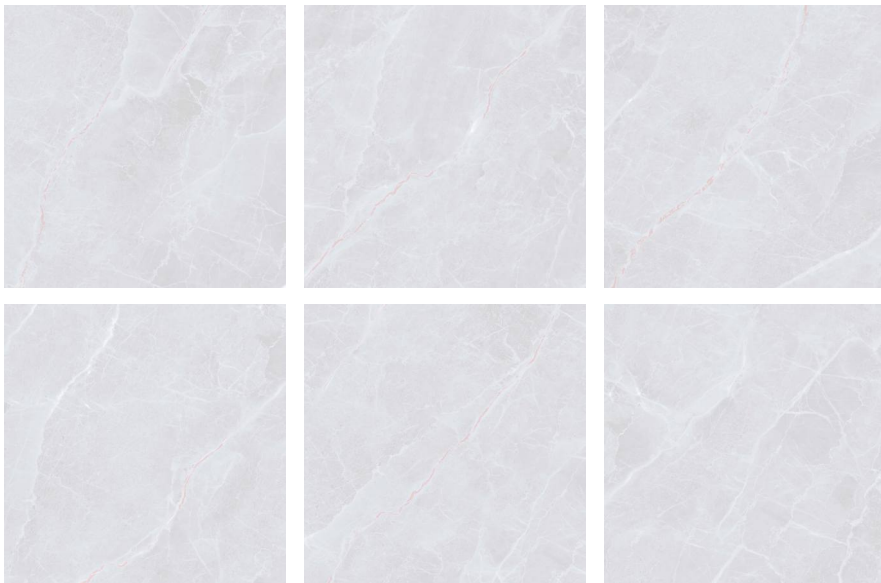
60x  
60cm



**SPECIAL**  
*Carving*

**Carving**  
Collection

600x600mm | New Addition



Design: **Brisbane Grey**  
Finish: **Carving**  
Series: **Special Color**

[www.spentagonceramic.com](http://www.spentagonceramic.com)



60x  
60cm



## BRISBANE GREY

600x600mm | New Addition

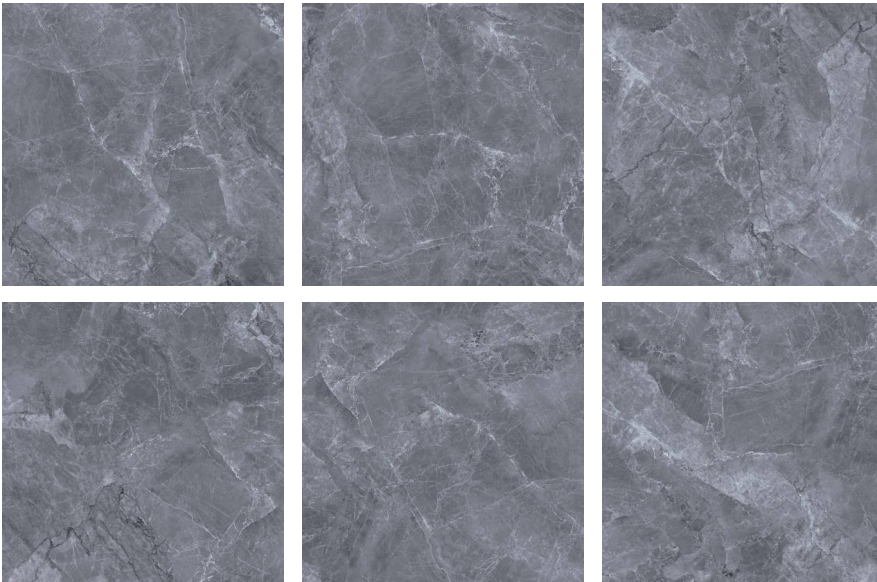
12+ SURFACE

100%  
WATER PROOF

**SPECIAL**  
*Carving*

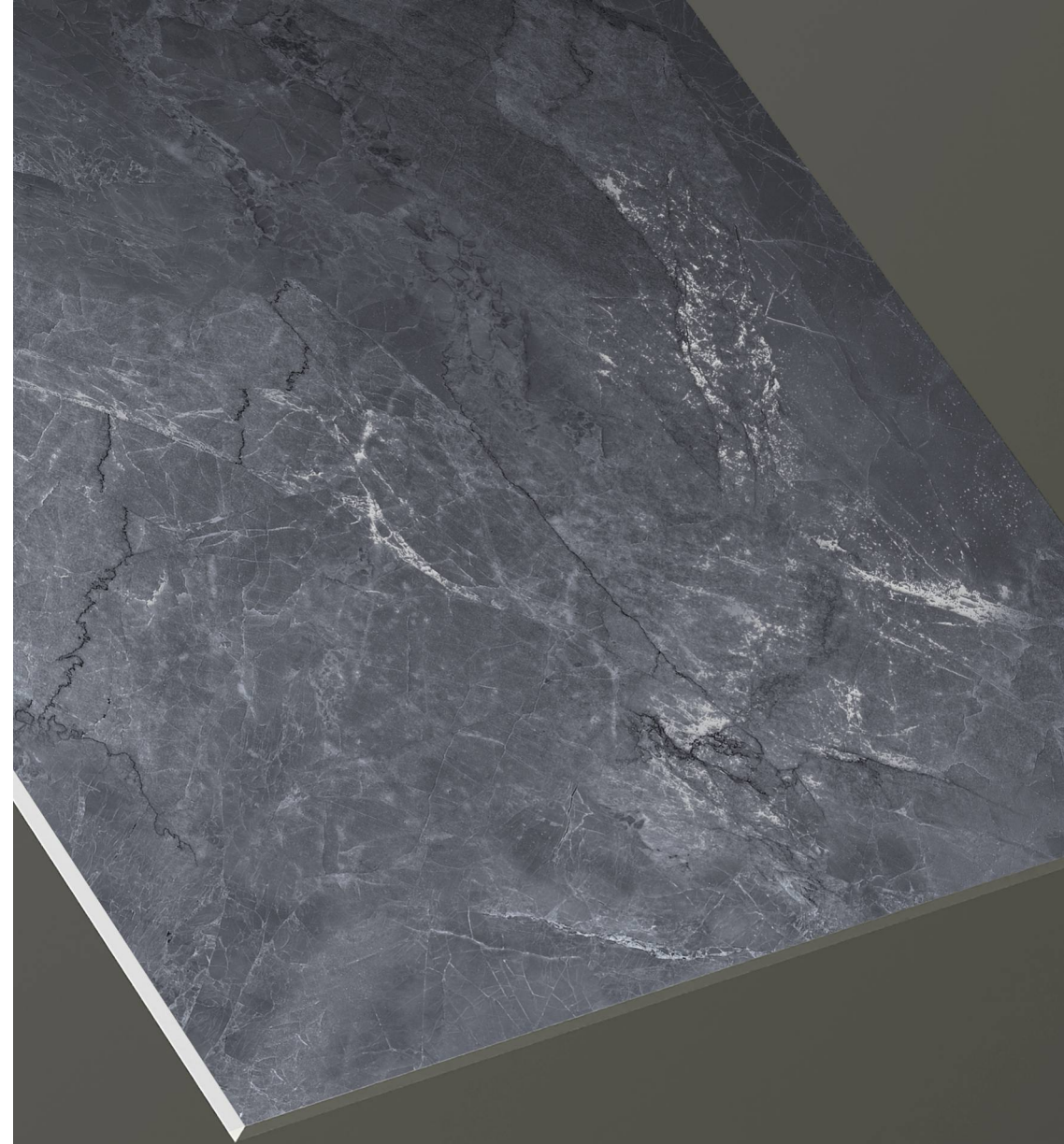
**Carving**  
Collection

600x600mm | New Addition



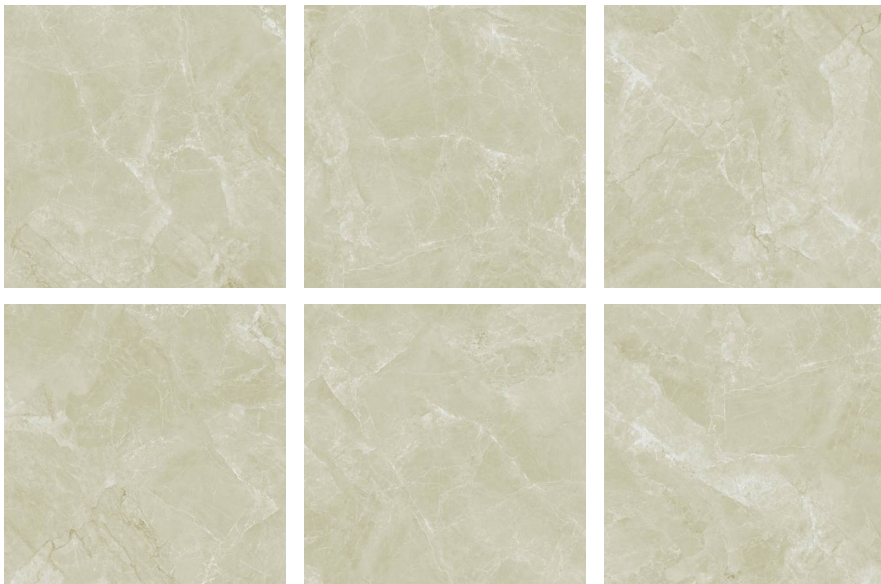
Design: **Canberra Nero**  
Finish: **Carving**  
Series: **Special Color**

[www.spentagonceramic.com](http://www.spentagonceramic.com)



60x  
60cm

600x600mm | New Addition



Design: **Canberra Smoke**  
Finish: **Carving**  
Series: **Special Color**





## CANBERRA SMOKE

600x600mm | New Addition

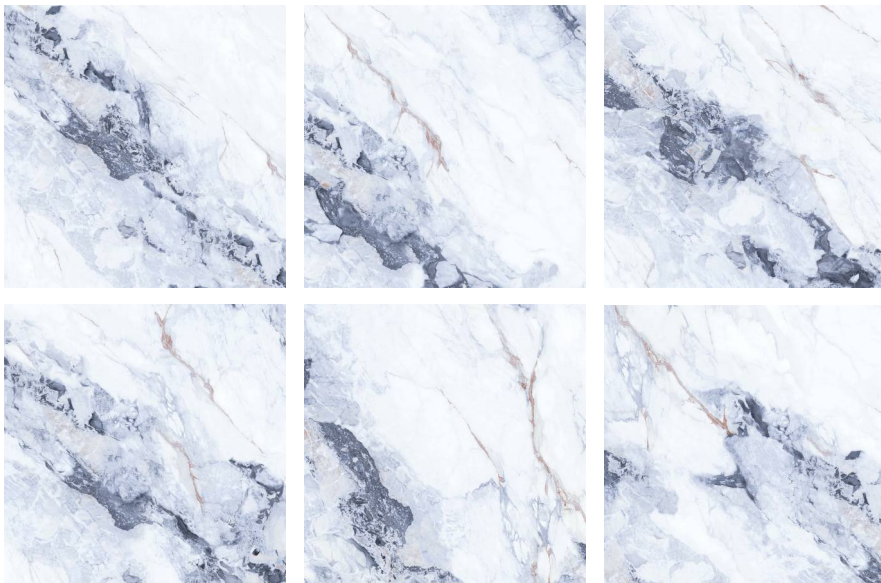
12+ SURFACE

100%  
WATER PROOF

**SPECIAL**  
*Carving*

**Carving**  
Collection

600x600mm | New Addition



Design: **Earlin Azul**  
Finish: **Carving**  
Series: **Special Color**

[www.spentagonceramic.com](http://www.spentagonceramic.com)

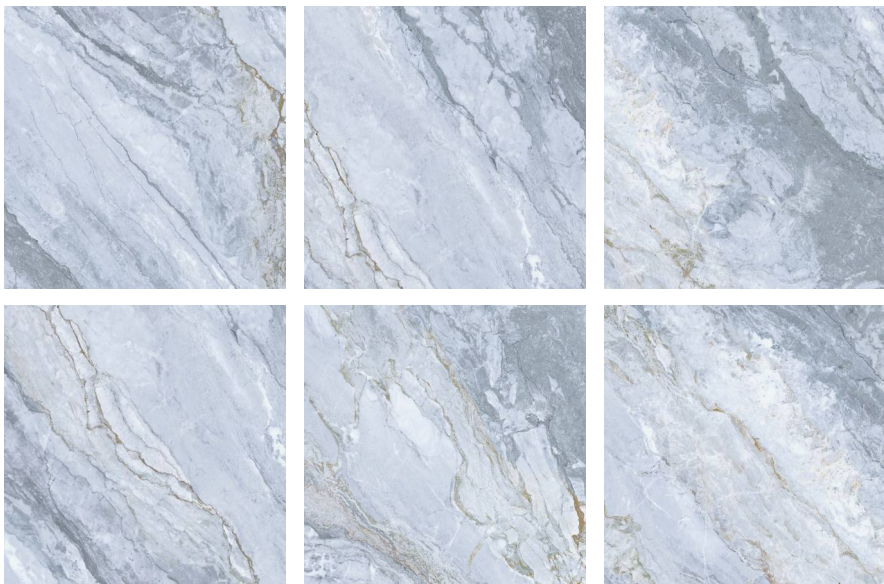


60x  
60cm

**SPECIAL**  
*Carving*

**Carving**  
Collection

600x600mm | New Addition



Design: **Earlin Silve**  
Finish: **Carving**  
Series: **Special Color**

[www.spentagonceramic.com](http://www.spentagonceramic.com)



60x  
60cm



## Earlin Silve

600x600mm | New Addition

12+ SURFACE

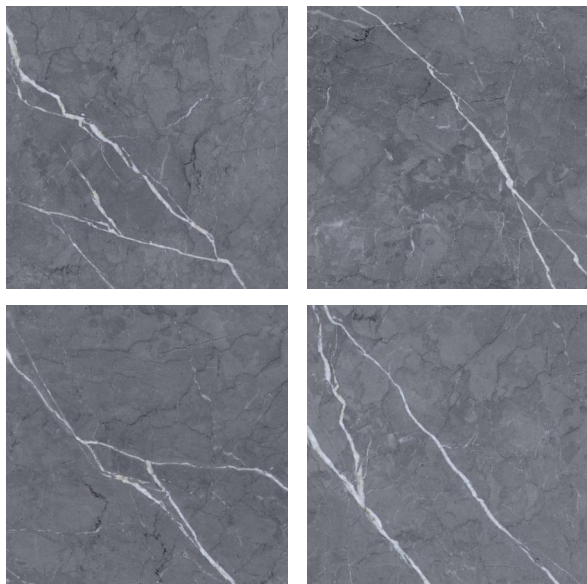
100%  
WATER PROOF



**SPECIAL**  
*Carving*

**Carving**  
Collection

600x600mm | New Addition



Design: **Fabiano Azul**  
Finish: **Carving**  
Series: **Special Color**

[www.spentagonceramic.com](http://www.spentagonceramic.com)



60x  
60cm



## FABIANO AZUL

600x600mm | New Addition

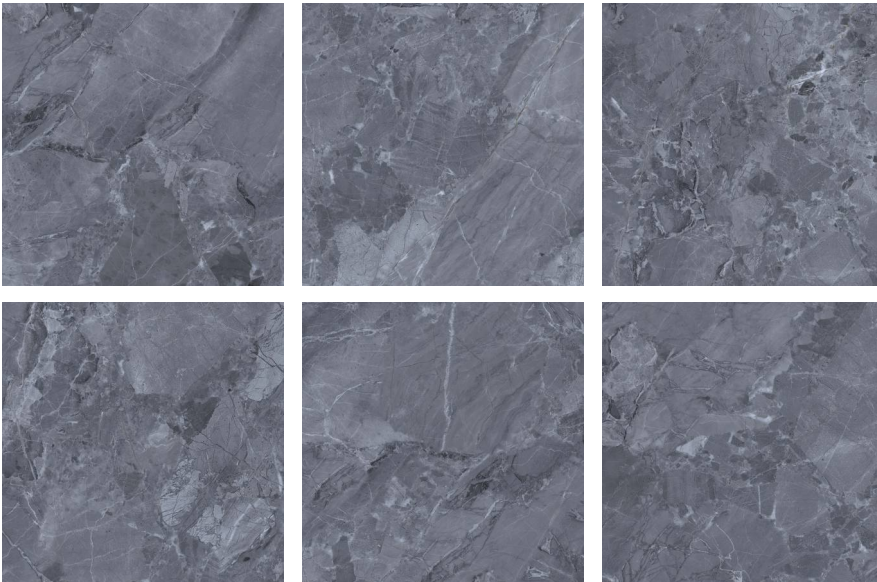
12+ SURFACE

100%  
WATER PROOF

**SPECIAL**  
*Carving*

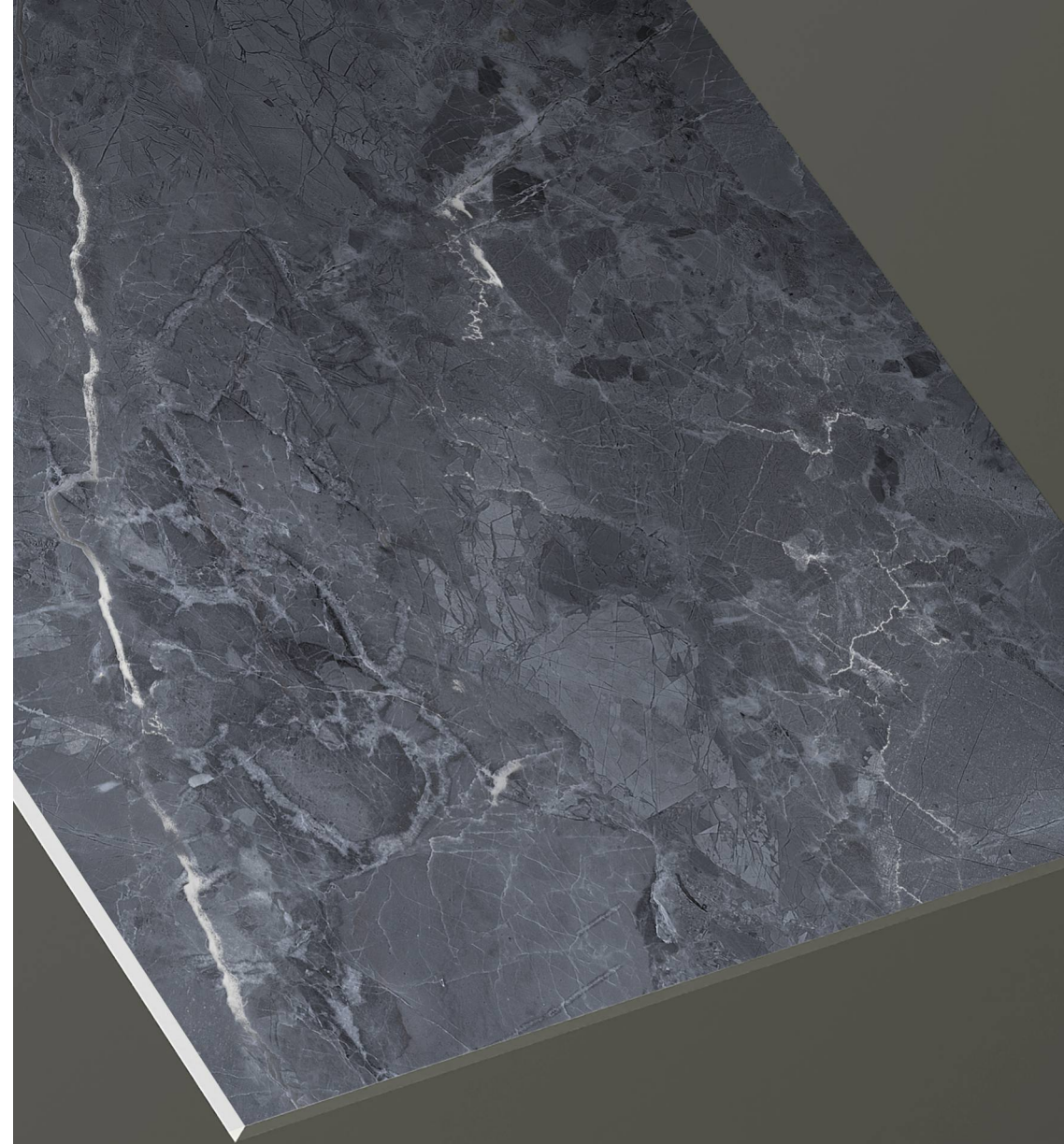
**Carving**  
Collection

600x600mm | New Addition



Design: **Olive Grey**  
Finish: **Carving**  
Series: **Special Color**

[www.spentagonceramic.com](http://www.spentagonceramic.com)

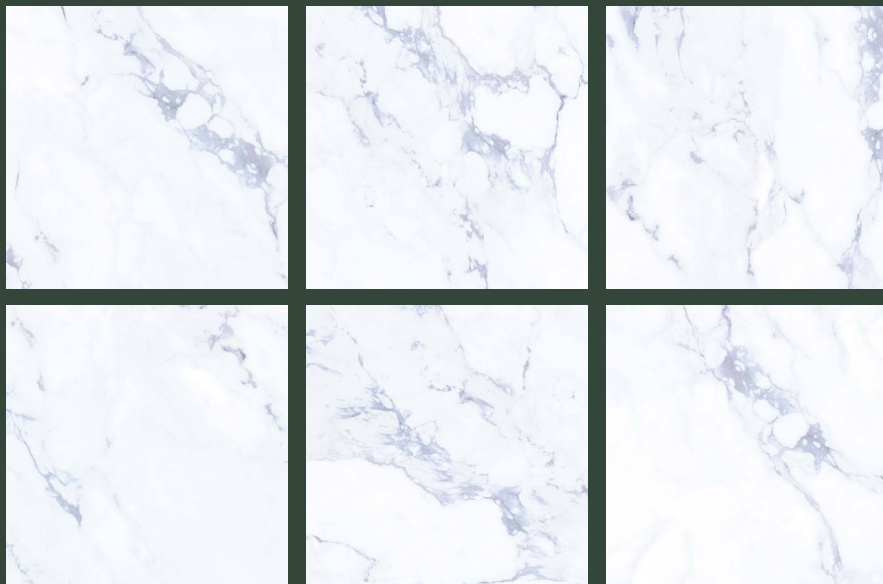


60x  
60cm

**SPECIAL**  
*Carving*

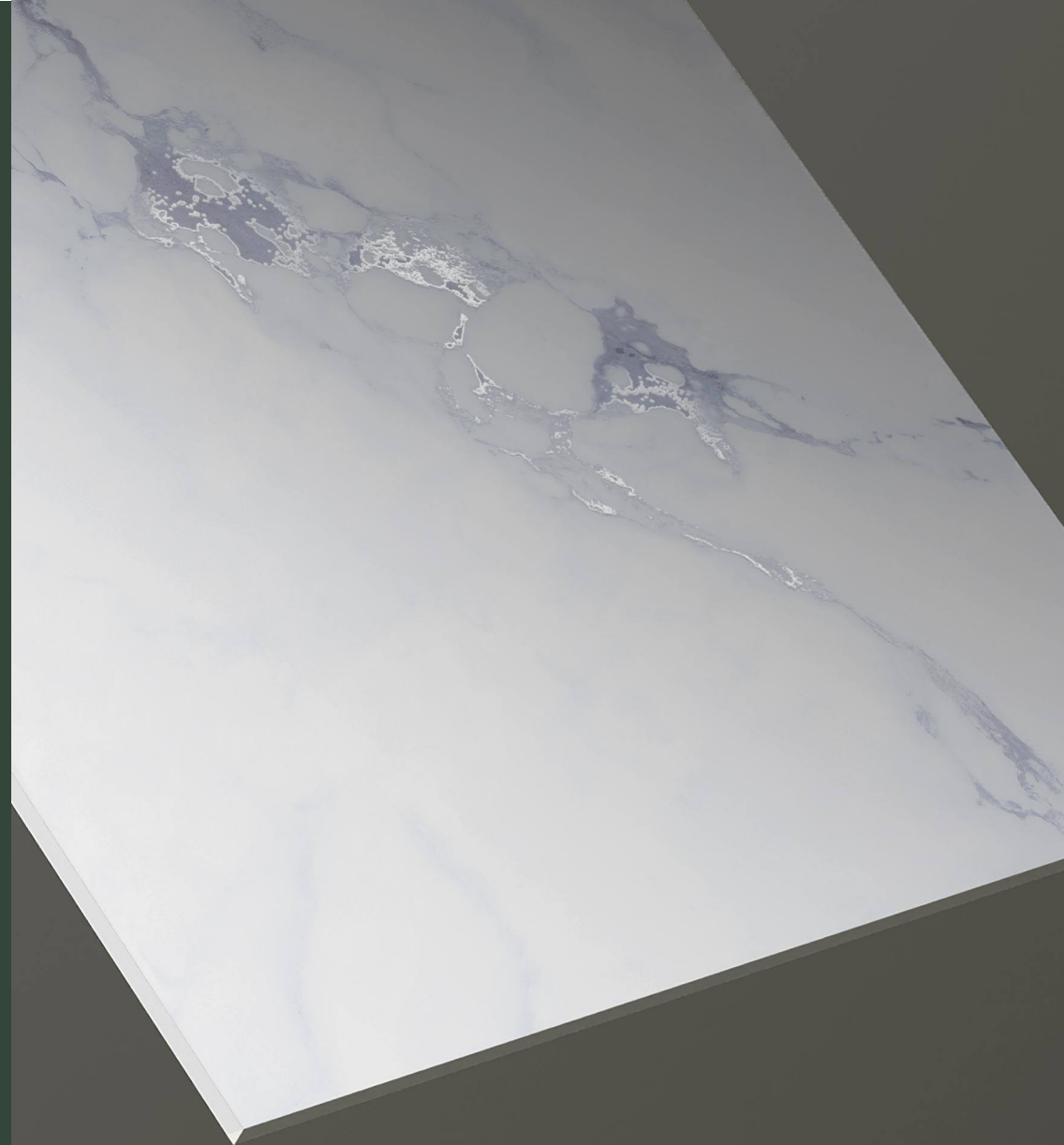
**Carving**  
Collection

600x600mm | New Addition



Design: **Satuario Luxe**  
Finish: **Carving**  
Series: **Special Color**

[www.spentagonceramic.com](http://www.spentagonceramic.com)



60x  
60cm



## SATUARIO LUXE

600x600mm | New Addition

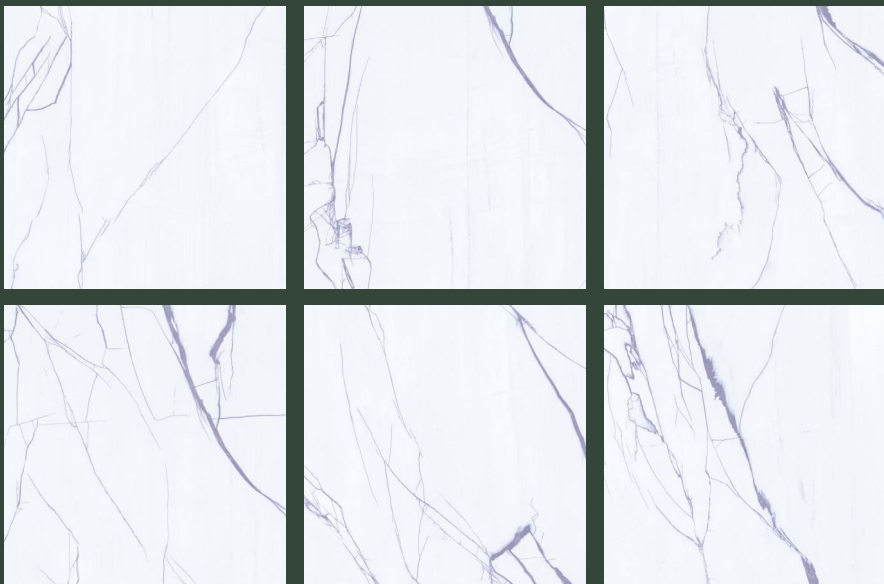
12+ SURFACE

100%  
WATER PROOF

**SPECIAL**  
*Carving*

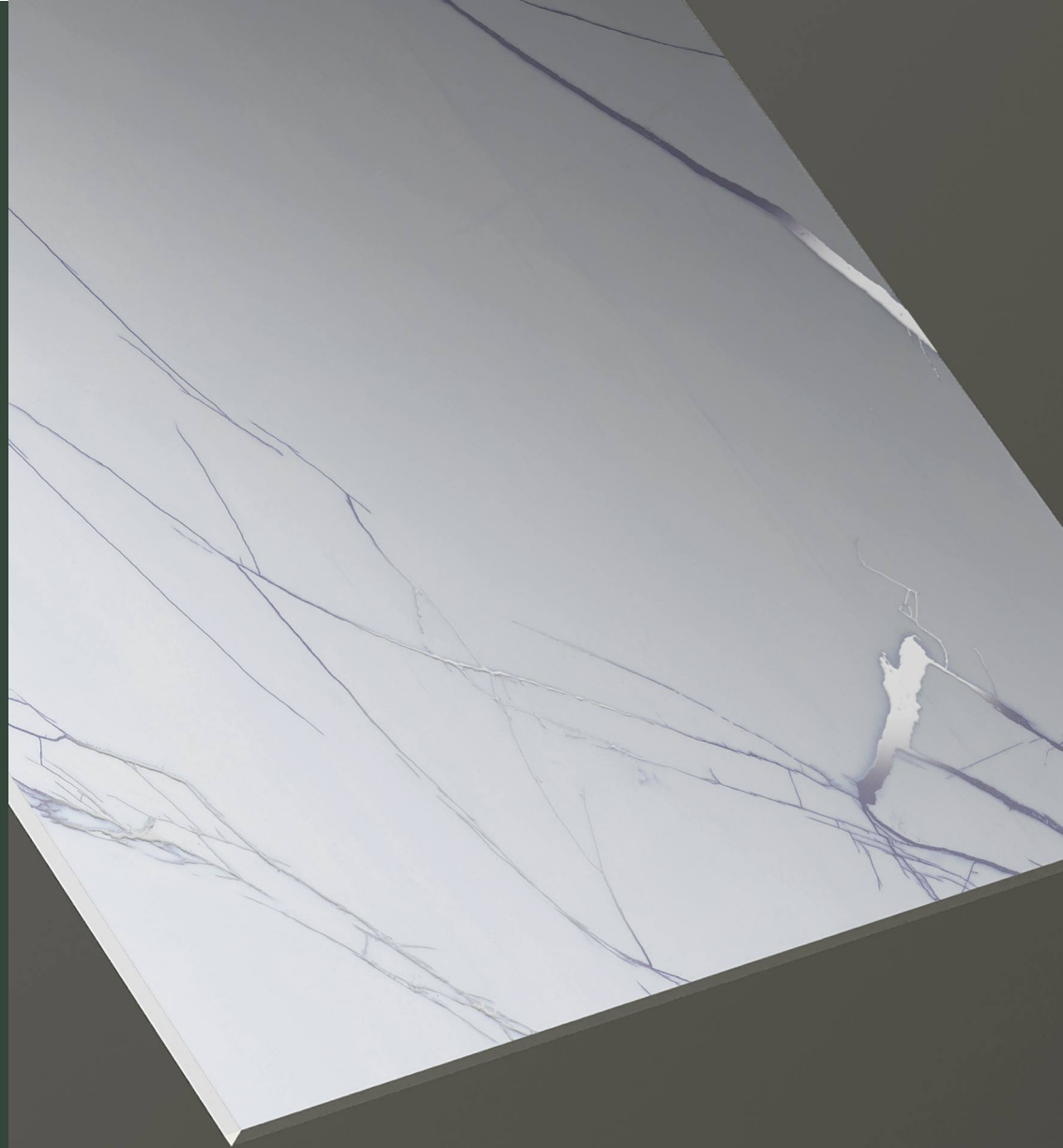
**Carving**  
Collection

600x600mm | New Addition



Design: **Satuario Red**  
Finish: **Carving**  
Series: **Special Color**

[www.spentagonceramic.com](http://www.spentagonceramic.com)



60x  
60cm

**SPECIAL**  
*Carving*

**Carving**  
Collection

600x600mm | New Addition



Design: **Vizer Marfil**  
Finish: **Carving**  
Series: **Special Color**

[www.spentagonceramic.com](http://www.spentagonceramic.com)



60x  
60cm



## VIZER MARFIL

600x600mm | New Addition

12+ SURFACE

100%  
WATER PROOF





*Delivering Your Dreams...*

**Jetpar Road, Near Riga Ceramic,  
Rangpar, Virat Nagar, Morbi - 363 64**

Call : +91 99786 18005 | +91 87587 77774

E-Mail : [info@spentagonceramic.com](mailto:info@spentagonceramic.com)

[www.spentagonceramic.com](http://www.spentagonceramic.com)